



THINK GREEN



Pre Engineered Green Buildings



Rapid Building System



High Rise & Steel Structures



Infrastructure Industry

## Our Vision

To make significant contribution to our ecosystem by providing sustainable green buildings steel structures for the infrastructure development globally.

## Our Mission

To provide premium Quality and smart solutions to buildings and structural steel for infrastructure industry at large by deploying innovative engineering and latest technologies.





Volta Green Structures (VGS) is a part of the strong Prasaditya Group, one of the reputed groups in India as well as in Africa with an annual turnover of USD 1.2 billion. Our group operations are spread across India and 16 African nations. Our Business interests are in over 15 Industry sectors from Cement to Software.

Core activity of VGS is to design, manufacture and install Pre-Engineered Buildings, Steel Buildings & structural Steel. We established manufacturing facility with a capacity of 40,000MT/Annum on Sadasivpet-Vikarabad State Highway. Rangareddy Dist., Telangana India.

## Core Strength of the Group

- Financially sound.
- Visionary, innovative and strong leadership.
- Competent and qualified team of professionals.
- Group is well-diversified across 15 business sectors.
- Strong network and presence in 16 African nations and South America
- Integrated approach provides excellent control over operations.
- Technology partnership with reputed and competent international organizations.



1. Pre Engineered Green Building
2. Rapid Building Systems (Cold Formed Steel)
3. High Rise Structures
4. Infrastructure Industry





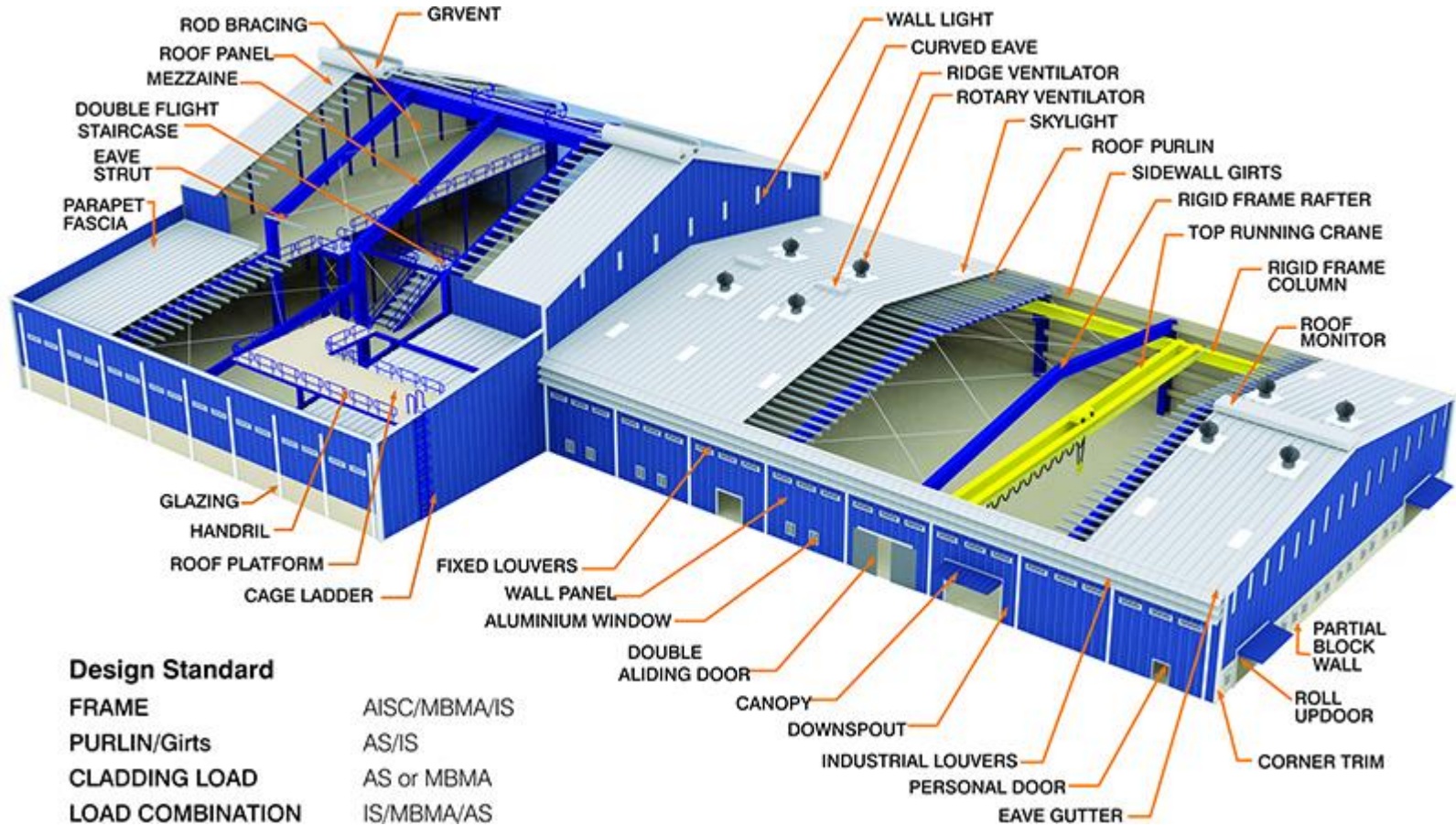
## Pre Engineered Green Building

VGS provides Pre Engineered Green Buildings. VGS has inherent capability to design, fabricate and install standard to any complex buildings.

We take pride to contribute towards protection of our environment. VGS buildings optimize energy efficiency, generate less waste and provide healthier spaces for occupants as compared to conventional steel buildings.



# PEB STRUCTURE NOMENCLATURE



## INDUSTRIAL

- WAREHOUSES
- FACTORIES
- WORKSHOPS
- ROLLING MILLS
- COLD STORAGES

## COMMERCIAL

- SHOPPING MALLS
- SHOWROOMS
- SUPERMARKETS
- RESTAURANTS
- OFFICE BUILDINGS
- THEATRES

## SPECIALIZED STRUCTURES

- AIRCRAFT HANGERS
- PARKING STATIONS
- FUEL STATIONS
- POULTRY FORMS
- METRO STATIONS
- BRIDGES
- RAILWAY STATION SHEDS

## INSTITUTIONS

- SCHOOLS
- EXHIBITION HALLS
- HOSPITALS
- HOSTELS



## Rapid Building System(Light Gauge Steel Buildings)



VGS in association with Technology partner FARMECAD, New Zealand provide complete Design and Build Light Gauge System that is innovative, cost effective and fast too construct.

This system is suitable for commercial, residential and mass housing projects which requires quick construction. All this backed by an in-depth knowledge and rapid response of a multi-lingual, global customer support team.

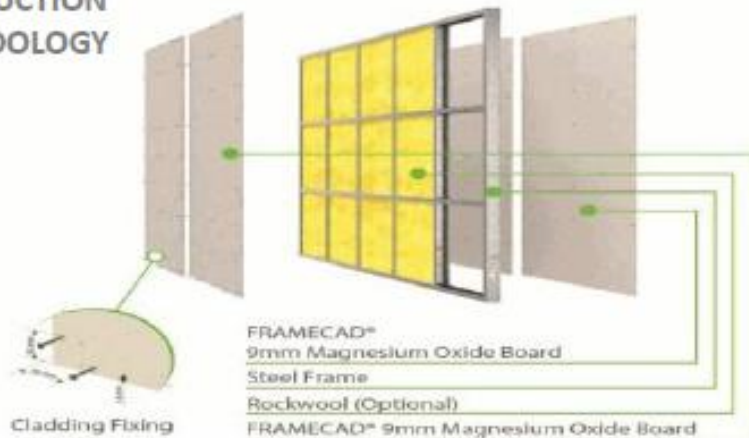


**The Rapid Building System** is the fastest and most efficient way to design and build strong, durable steel framed buildings anywhere in the world.

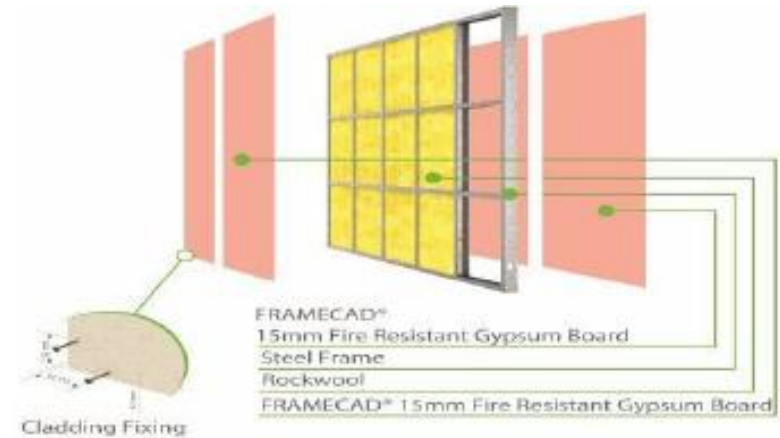
With the use of the VOLTA GREEN STRUCTURES system, we have developed a system which is an advanced, end-to-end design and build system enabling the rapid construction of quality buildings for different projects ranging from High end Villas to mass housing projects. We can also use the same construction system to build commercial project in record time.



## CONSTRUCTION METHODOLOGY



**Fibre Cement and steel framing**



**Fibre Cement Sheeting and Steel framing**



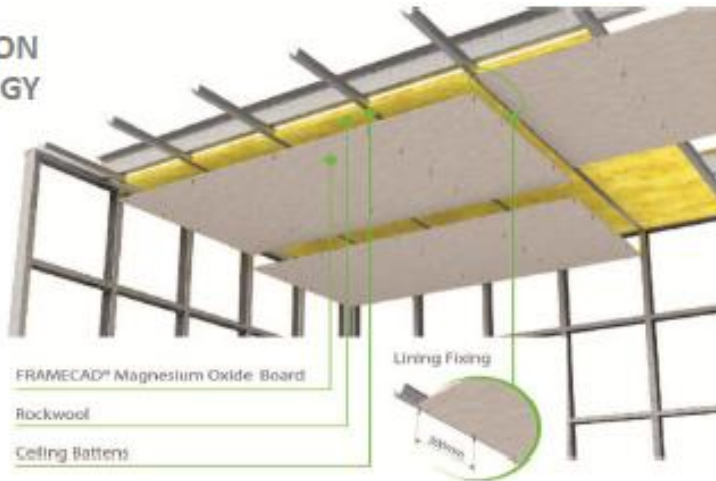
**Fibre Cement sheeting and steel framing**



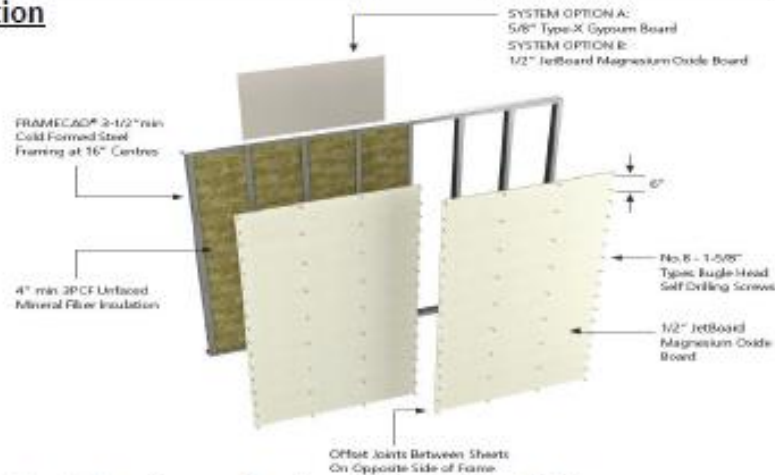
**Fire Resistant Gypsum board, steel framing and Rockwool**



## CONSTRUCTION METHODOLOGY



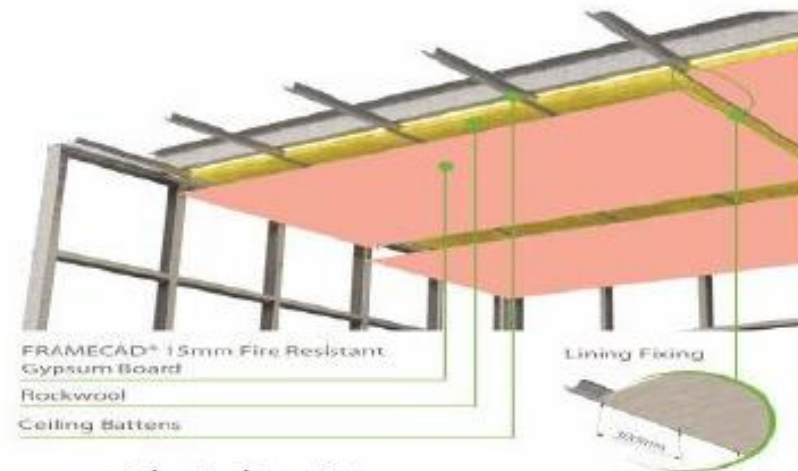
### Magnesium Oxide Board over Ceiling battens, optional Glass wool for insulation



### Load bearing wall system 60 min Fire Rating



### Gypsum board, ceiling battens and rockwool



### Fire Resistant Gypsum

## Features and Benefits

- Fire and pest resistant, and tested to withstand earthquakes
- Strong and reliable construction method
- Cost-effective due to speed and method of construction



## ADVANTAGES



### QUALITY STRUCTURES

Our buildings are manufactured to very tight tolerances. They have a superior strength-to-weight ratio. LGSF structures can be engineered to withstand extreme loads such as 240km/h winds, zone IV seismic forces under the International Building Code and 3 feet of snow loading. Furthermore, our factory based manufacturing environment consistently delivers superior quality standards through rigorous control of the whole construction process.



### LESS WASTE, GREATER RECYCLABILITY

Light steel reduces waste and subsequently lowers waste disposal and removal costs. Our structural components are fabricated to exact specifications, thereby reducing the amount of excess material. Any waste generated is recycled in the production centre. Steel is 100% recyclable, hence does not contribute to depletion of natural resources or degradation of environment.



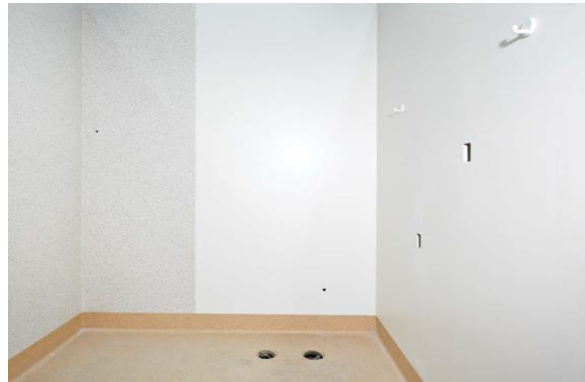
### ENHANCED THERMAL EFFICIENCY

Compared with conventional brickwork, our insulated walls conduct 90% less heat, ensuring that the interiors remain cool during the summer and warm during the winter. The steel frame design minimizes thermal bridges, making the buildings easier to heat or cool with significantly less use of energy.



# RAPID BUILDING SYSTEM – TOILET PODS

- VGS manufactures complete bathroom pods.
- Our process starts with consultation, design and prototyping, ensuring we deliver a high quality product that meets your standards before we begin production.



1

## DESIGN & PLANNING

Buildability Consultation >  
Risk & Value Management > 3D Modeling >  
Prototyping

2

## PROCUREMENT

Supply Chain > Inventory Management

3

## MANUFACTURE

Manufacture > Project Sequencing >  
Quality Assurance

4

## DELIVERY TO SITE

Dispatch > Transported to Site >

5

## COMPLETION & FOLLOW UP

Commissioning > Project Completion >  
Customer Follow Up

- Architectural freedom
- Higher Quality
- Faster Delivery
- Lower Costs
- Sustainable and Safe
- Reduced Material requirement
- Reduced wastage
- Less transport energy
- Increased material recyclability





## High Rise Buildings & Steel Structures

VGS is associated with technology partner TTJ Design & Engineering Pte. Ltd., Singapore. Provides structural steel design, fabrication and erection expertise for extensive and varied portfolio of projects such as high rise building shopping malls/retail centers, stadiums, airports, long span roof structures, industrial and process plants, bridges, metro stations, and multilevel parking system. We ensure that all fabrication and erection works are carried out strictly in accordance with approved health, safety and environmental requirements and quality is maintained at the highest level at all times.





## Infrastructure Industry

VGS is associated with group company design tribe Pvt. Ltd. undertakes design, fabrications and installation of steel structures for various industrial sectors like:

- Power Plant
- Cement plants
- Water & sewerage treatment plants
- Textiles/Chemical plants
- Road & Rail Bridges
- Other major infrastructures projects



**VGS has created 40,000MT/ Year capacity state-of-the-art Fabrication facility using latest technology**

**Plant -1 –Location- Sadasivpet Hyderabad.**

- Total Area-13 Acre.
- Total Covered Shed-15,000Sqm
- Heaviest Single Piece handling capacity-30MT
- Max Beam Width on H Beam line – 2,000 mm
- Installed capacity- 25,000 MT PA
- Work Men Strength-300 Nos.

**Plant-2-Location-Patancheru Hyderabad.**

- Total covered shed – 10,000SQM
- Heaviest Single Piece handling capacity-20MT
- Max Beam Width on H Beam line – 2,000 mm
- Installed capacity- 15,000 MT PA
- Work Men Strength-150 Nos.









Plazma Cutting Machine ↗



H-Beam Welding Line ↗



CNC Drilling Machine. ↗



Shearing Machine ↗



FRAMECAD Machines ↗

- F450iT
- F325iT

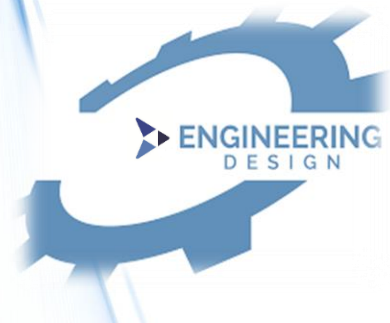


Radial Drilling Machine ↗

- Hyderabad- Design And Detailing  
Team Strength-25 Nos.

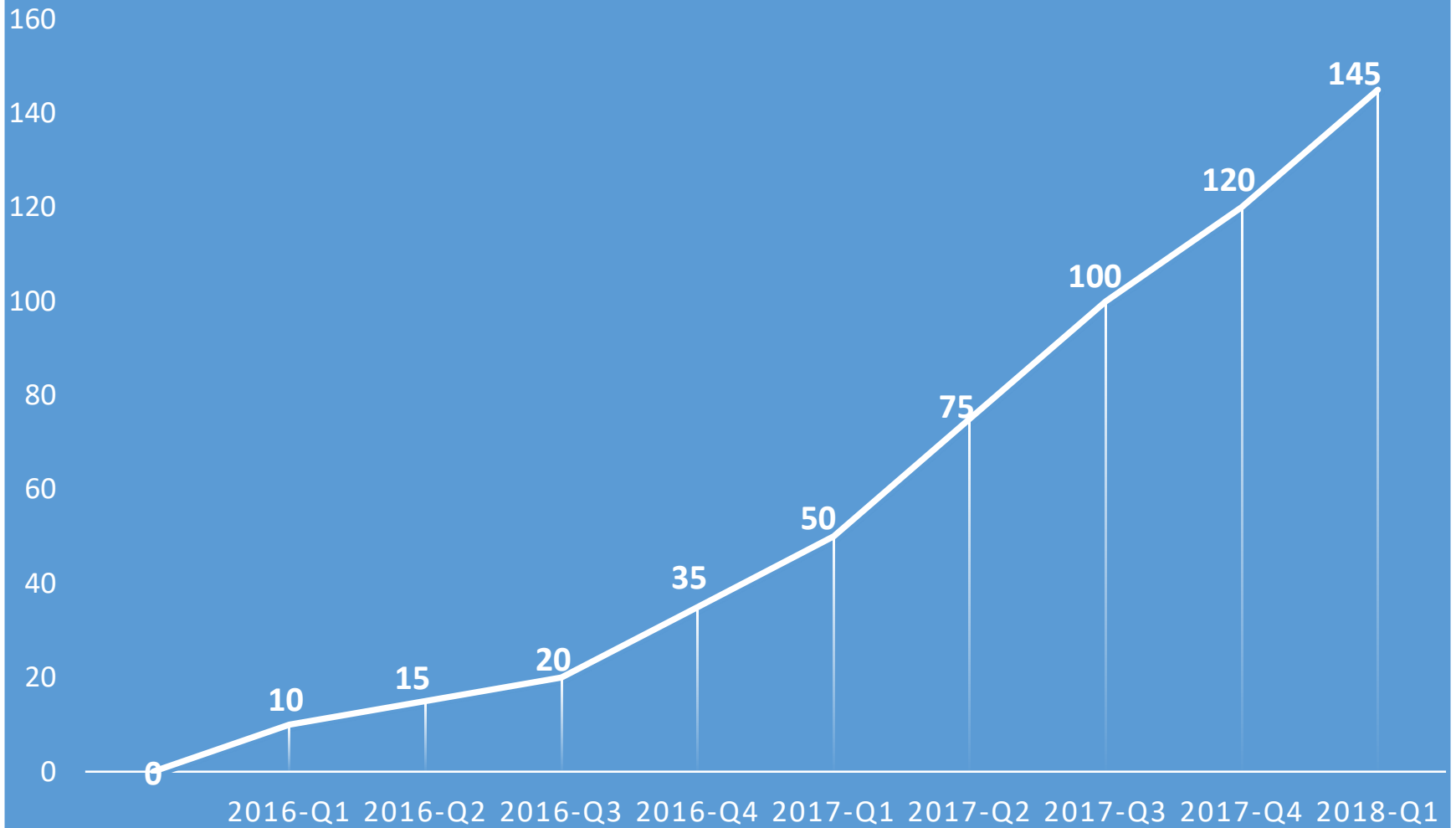
Design Tribe(Group Company)  
Team Strength-80 Nos.

- Puducherry- Design Centre.  
Team Strength-10 Nos.

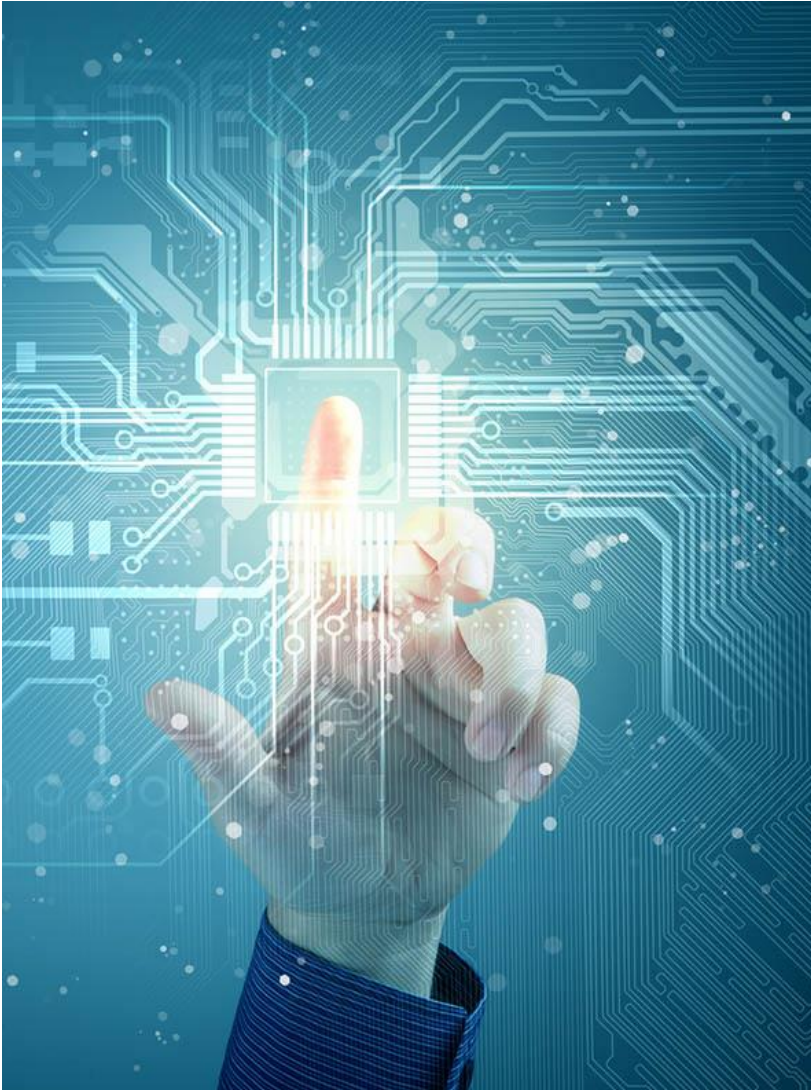


## GROWTH GRAPH

TURNOVER IN CR







TTJ Holdings is a long established Singapore-based company with factories in Singapore & Malaysia. Their principal business activities are in the design, supply, fabrication and erection of a wide spectrum of structural steelworks for use in the construction of buildings, factories, plants, infrastructure and operation of dormitories. We leverage on our expertise in design fabrication and installation of highly sophisticated steel structures to serve customers in various industries.



Framecad is dedicated organization to provide complete design and build system that is innovative, cost-effective, suitable for residential and commercial construction, and fast to construct in developed and developing markets worldwide. Framecad stands behind the quality and reliability of the VGS Framecad system, products and services. The Framecad System is a modern method of rapid, quality construction using light- gauge steel framing.

VGS places great emphasis on delivery of high quality products to its customers. Design and manufacturing facilities follow ISO 9001:2015 procedures. All products manufactured must pass stringent quality testing procedures, a standard inspection and testing plan is followed for all jobs.

Quality is a continuous process at VGS - where organization-wide action is taken to increase effectiveness and efficiency of the engineering process. This means that we continuously concentrate on improving our own performance to ensure that you -the client - benefit. Our aim is to meet your expectations every time. We take a proactive stance towards quality moving beyond Quality Control to provide Quality Assurance, so you can be confident that your requirements will be met with predictable quality - consistently. Our stringent process ensures that high quality standards are reflected as results in your business, guaranteeing your satisfaction every time.

## ISO 9001:2015

### Certificate Of Registration

**Geotek Global Certification Pvt. Ltd.**

hereby certify that the organization

**Volta Green Structures Pvt. Ltd.**

Office Address : Ground Floor, A-Wing, Rajaprasadamu Building, Botanical Garden Road,  
Kondapur, Hyderabad 500084, Telangana, India  
Factory Address : Survey Nos. 16 & 281, Morangapally Village, Mominpet Mandal, Sadasivpet-  
Vikarabad State Highway, Vikarabad District 501202, Telangana, India

has implemented and maintains a **Quality Management System** for

Scope :

Design, Manufacture, Supply & Erection of Steel Building Systems, Light Gauge Framing Systems and Solar PV Mounting Module Structures for Commercial, Industrial and Infrastructure Sectors to a Worldwide Client Base

An audit was performed and proof has been furnished that the management system fulfils the requirements of international standard detailed below ...

Standard : ISO 9001:2015  
Certificate No. : 15/GGCS/09/524  
Certification Date : 18<sup>th</sup> November 2015  
Scope Change Date : 04<sup>th</sup> January 2017  
Cert. Expiry Date : 17<sup>th</sup> November 2018



*K. Mahesh*  
**Chief Executive Officer**  
Geotek Global Certification Pvt. Ltd.  
102, Raj Legacy, Near Bramhand Phase 5, Off. GB Road,  
Thane (West), Pin 400 607, Maharashtra, India

Geotek Global Certification Pvt. Ltd. is accredited by International Management Accreditation Board (Singapore)  
Level 25, One Raffles Quay North Tower, Raffles Place, Singapore 048583, Phone No. +65 6232 2442, Fax No. +65 6232 2888  
The continual validity of the certificate is conditional to compliance with the terms and the conditions of Geotek Global Certification Pvt. Ltd. - Certification Scheme Regulation. Validity of the certificate may be verified on following websites :  
[www.geotek.co.in](http://www.geotek.co.in) and accreditation body's website : [www.imab.com](http://www.imab.com)

## BS OHSAS 18001:2007

### Certificate Of Registration

**Geotek Global Certification Pvt. Ltd.**

hereby certify that the organization

**Volta Green Structures Pvt. Ltd.**

Office Address : Ground Floor, A-Wing, Rajaprasadamu Building, Botanical Garden Road,  
Kondapur, Rangareddy District, Hyderabad 500084, Telangana, India  
Factory Address : Survey Nos. 16 & 281, Morangapally Village, Mominpet Mandal, Sadasivpet-  
Vikarabad State Highway, Vikarabad District 501202, Telangana, India

has implemented and maintains an **Occupational Health And Safety Management System** for

Scope :

Design, Manufacture, Supply & Erection of Steel Building Systems, Light Gauge Framing Systems and Solar PV Mounting Module Structures for Commercial, Industrial and Infrastructure Sectors to a Worldwide Client Base

An audit was performed and proof has been furnished that the management system fulfils the requirements of international standard detailed below ...

Standard : BS OHSAS 18001:2007  
Certificate No. : 17.GGCS.IN.18082  
Certification Date : 08<sup>th</sup> December 2017  
Cert. Expiry Date : 07<sup>th</sup> December 2020



*K. Mahesh*  
**Chief Executive Officer**  
Geotek Global Certification Pvt. Ltd.  
102, Raj Legacy, Near Bramhand Phase 5, Off. GB Road,  
Thane (West), Pin 400607, Maharashtra, India

Geotek Global Certification Pvt. Ltd. is accredited by International Management Accreditation Board (Singapore)  
51, Goldhill Plaza, #07-10/11, Singapore 308900  
The continual validity of the certificate is conditional to compliance with the terms and the conditions of Geotek Global Certification Pvt. Ltd. - Certification Scheme Regulation. Validity of the certificate may be verified on following websites :  
[www.geotek.co.in](http://www.geotek.co.in) and accreditation body's website : [www.imab.com](http://www.imab.com)



# LIST OF MAJOR COMPLETED PROJECTS

## PRE ENGINEERED GREEN BUILDING

SL.NO	PROJECT DETAILS	TYPE OF BUILDING	LOCATION	COUNTRY	MT/SQ.	Building Size (L x W x H)
1	DECCAN AUTO LTD	FACTORY SHED	PATTANCHERU, TELANGANA	INDIA	1,200	250 x 80 x 19
2	DIAMOND CEMENTS LTD SA	STACKER RECLAIMER SHED	MALI	MALI	805	255 x 54 x 13
3	CARLSBERG BEVERAGES PVT. LTD.	CROWN CAP FACTORY	SANGAREDDY	INDIA	120	108X 38 X 8
4	DIAMOND CEMENT CONGO	STACKER RECLAIMER SHED	CONGO	CONGO	430	175 X 56 X 14
5	DIAMOND IVORY CEMENT PLC	CLINCKER STOCK PILE SHED	IVORY COAST	IVORY COAST	125	100 X 30 X 13
6	DIAMOND CEMENT TOGO SA	CLINCKER STOCK PILE SHED	TOGO	TOGO	125	100X 30 X 13
7	DIAMOND CEMENT GUINEA	STACKER RECLAIMER SHED	GUINEA CONAKRY	GUINEA CONAKRY	450	150 X 56 X 14
8	GE - SHAPOORJI PALLONJI CONSTRUCTIONS LTD.	GE MAIN PLANT EXPANSION	CHAKAN, PUNE	INDIA	195	45 X 35 X 21
9	GR CONSTRUCTIONS -HPCL	VIZAG REFINERY MODERNIZATION	VISHAKHAPATNAM	INDIA	405	[129X 35X 7.5] [40X40X7.5] [40X10 X 8] [35 X 20 X 11.8]
10	SHAHI EXPORTS PRIVATE LIMITED	FACTORY BUILDING	NARASIPURA, BANGALORE	INDIA	106	100X44X6.6
11	LARSEN & TOUBRO LIMITED, CONSTRUCTION	HYDERABAD METRO RAIL PROJECT	HYDERABAD, TELANGANA	INDIA	270	134 X 20 X 4
12	AHP GARMENTS PRIVATE LIMITED	FACTORY BUILDING	HASSAN, KARNATAKA	INDIA	368	103 X 74 X 7.3
13	OM PRAKASH PACKAGING PRIVATE LIMITED	MANUFACTURING UNIT	MUMBAI, MAHARASHTRA	INDIA	133	64X28X10.7
14	EITHIO CEMENT P.L.C	CEMENT PLANT	ETHIOPIA	AFRICA	7,000	-
15	SHAPOORJI PALLONJI CONSTRUCTION LTD	GE DIESEL LOCOMOTIVE FACTORY	BIHAR	INDIA	4,200	369 X 128 X 21
16	MUSADDILAL PROJECTS LTD	OFFICE BUILDING	CHENNAI	INDIA	140	37.55X121.5 X 13.5
17	NAWALOKA CONSTRUCTION COMPANY (PRIVATE) LIMITED	ITC PROJECT	COLOMBO	SRI LANKA	147	21X 46 X 9
18	LARSEN & TOUBRO LIMITED, CONSTRUCTION	HYDERABAD METRO RAIL PROJECT	HYDERABAD, TELANGANA	INDIA	140	134X20X4

# VGS- LIST OF ONGOING PROJECTS

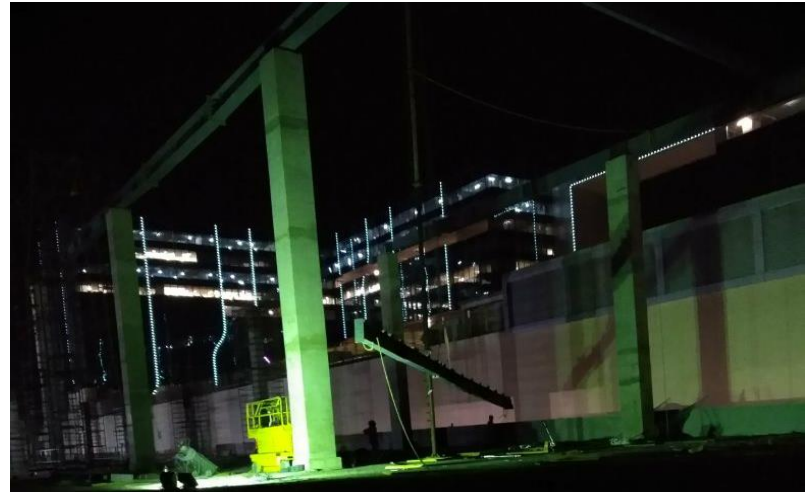
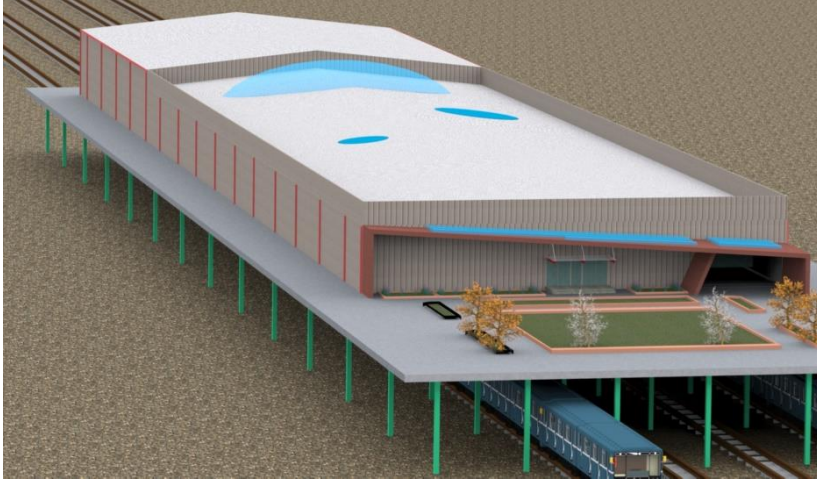
SL.NO	PROJECT DETAILS	TYPE OF BUILDING	LOCATION	COUNTRY	MT
1	IL & FS ENGINEERING SERVICE	NAGPUR METRO RAILWAY STATIONS	NAGPUR	INDIA	1800
2	SHAPOORJI PALLONJI &CO.PVT.LTD	GE DIESEL LOCOMOTIVE SHED	UTTAR PRADESH(ROZA)	INDIA	298
3	TOSHALI CEMENT PVT.LTD	FACTORY BUILDING	ODISHA	INDIA	22.6
4	LARSEN & TOUBRO LIMITED	HYDERABAD METRO RAIL STATIONS	HYDERABAD	INDIA	140
5	L&T SEA WOOD LIMITED	COMMERCIAL MALL ON EXISTING RAILWAY STATION	NAVI MUMBAI	INDIA	1700
6	BIOLOGICAL E LIMITED	FACTORY BUILDING	HYDERABAD	INDIA	675
7	KEC INTERNATIONAL LIMITED	PAINT SHOP-1 BUILDING	ANANTHAPURAMU	INDIA	1900
8	KEC INTERNATIONAL LIMITED	PAINT SHOP-2 BUILDING	ANANTHAPURAMU	INDIA	2600
9	TOSHALI CEMENT PVT.LTD	ROOF SHEETING	ODISHA	INDIA	23
10	TRUE BUILD TECHNOLOGIES PVT.LTD	HIGH RISE BUILDING	HYDERABAD	INDIA	450
11	CAUSTIC SODA PLANT (PEB)	FACTORY BUILDING	DOHA-QATAR	QATAR	150
12	CAUSTIC SODA PLANT (STRUCTURAL)	FACTORY BUILDING	DOHA-QATAR	QATAR	700
13	PSV PRECAST PVT LIMITED	WARE HOUSE	YAWAPUR	INDIA	60
14	SHAPOORJI PALLONJI &CO.PVT.LTD	GE DIESEL LOCOMOTIVE	BIHAR	INDIA	400
15	AYOKI FABRICATION P.L	PEB BUILDING	IVORY COAST	AFRICA	1250
16	ITD CEMENTATION INDIA LIMITED	PRE- ENGINEERED STRUCTURES -2 ELEVATED METRO STATIONS	NAGPUR	INDIA	350
17	THERMAX LIMITED	COAL CRUSHER SHED	SHARJAH	UAE	170

# GE DIESEL LOCOMOTIVE FACTORY, BIHAR









**BUILDING DIMENSION: 370L X 65W X 12H**

**TOTAL TONNAGE:1,700 MT.**



# GE MAIN PLANT EXPANSION PROJECT- CHAKAN, PUNE



Building information- Length-45M - Width-35M- Eave Height-23M.  
Crane Max EOT Crane Cap-30MT. Crane Span -30M. Roofing and Cladding System- FM Global Approved.









# GUEST HOUSE CUM OFFICE PROJECT, ANDHRA PRADESH





# WORKMEN COLONY G+1, ANDHRA PRADESH

AREA - 30690 SFT



# WORKMEN COLONY G+1, ANDHRA PRADESH



ON GOING PROJECTS  
LABOR COLONY – 30690 SFT  
ANDHRA PRADESH





# GE LOCOMOTIVE SHED, ROZA, BIHAR







# IL & FS METRO RAILWAY STATIONS, NAGPUR









- We apply Innovative Engineering with strong design team ably lead by highly experienced technocrats with the help of, latest software and systems.
- We believe that the design is heart of any creation. We do 3-D analysis to ensure we provide first time right and most optimum design.
- Our commitment is to provide smart, green and sustainable construction solutions and effective project management.
- **We track all dispatches from plant to site through GPS in every vehicle carrying FG.**
- Traceability of finished good through bar coding.
- Site work monitoring through CCTV network.



1. Safety induction for all staff & contract workers, record should be maintained
2. Ensure all workmen Medically fit for the site works.
3. Every person who ever work in site, must know site safety rules  
And regulations
4. Every worker should well train and know what to do & how to do in  
safe manner





## PROPER CLOTHING

Shirts, long pants and hard soul shoes, a 6-inch-high boot is recommended.





## SAFETY MEASURES TO BE FOLLOWED WHILE LOADING & UNLOADING OF MATERIAL

- ★ Access to the trailers should be easy and inspected well in advance to avoid any obstructions such as overhead electric lines, etc.
- ★ Trailers should be in good working condition especially the brakes, lights, horns and other warning signals.
- ★ Trailer should always be supported by the signalman while unloading material.

## Safety Tips

### Precaution at site

1. Never disregard the PPE's while unloading the material
2. Never guide the lifted load with bare hands
3. Never move under the lifted load
4. Never use damaged slings, shackles, etc.





1. Volta greens logistic team at plant shall ensure all material will secure properly in designated area
2. Hardware shall be packed properly, sheets if any come from plant shall be unloaded at level area, site loading supervisor shall ensure material unloaded at designated area





1. Life line arrangement at roof shall be maintained and all workmen shall know their anchor point system during sheeting works.
2. No person is allowed to dump or throw any material at ground level at site.



1. Liner sheeting work shall be carried out with MEWP or scissor lift machine.
2. Client must provide clear area for liner sheeting works. No one allow to work under suspended load.





1. Motivational Programs, Surprise Pep Talks, Job Safety Related Training, height work training shall be carried out throughout the job on schedule date.
2. To provide appropriate training and disseminate information to enable all employees to accept individual responsibility for Environment, Health and Safety, implement best practices, and work in partnership to create a culture of continuous improvement.





Motivation to site team from Management Awarding  
best performer at Job site.



1. Emergency Assembly point
2. Monthly mock drill exercise, and event discuss with workman and staff.
3. Local tie up for ambulance and treatment in near by hospital.
4. Local tie up hospital numbers shall be display on site.
5. List of emergency numbers visible all in site area







**Corporate Office:**

Ground Floor, Rajapraasadamu,  
Besides Jain Heritage School, Botanical garden road, Kondapur, Hyderabad, Telangana,  
India - 500084

Tel: +91-40-23014152; email: [info@voltagegreens.com](mailto:info@voltagegreens.com)

**Plant 1 -Manufacturing Facility:**

Sy no's: 16 & 281, Morangapally Village,  
Mominpet Mandal, Sadasivpet,  
Vikarabad Sate Highway, Ranga Reddy District,  
Telangana, 501202,India.

**Plant-2- Manufacturing Facility:**

Sy. No 270,Jinaram Mandal  
Patancherru ,Kodakanchi village.  
Medak Dist. Telangana-502319

Chennai Sales Office:+91 9566085206 | Pune/Mumbai Sales office:+91 9370466595  
Hyderabad Sales Office:+91 9133384224 | RBS/LGFS: +91 9010209955 |  
([www.voltagegreens.com](http://www.voltagegreens.com))



*Thank you*



Volta Green  
STRUCTURES

Think Smart..Think Green..!